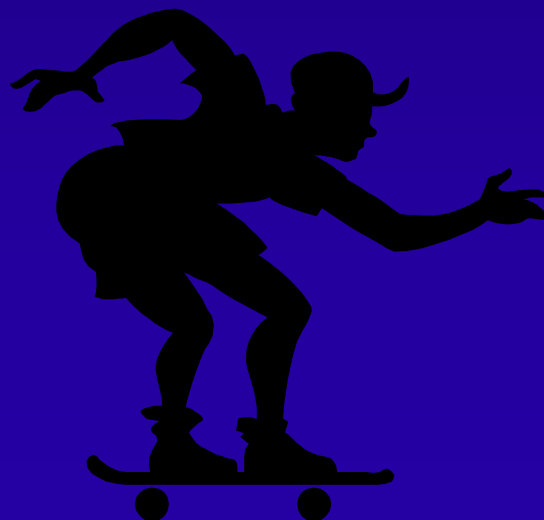


# Chatham-Kent Mayor's Youth Council

## Skateboard Park Implementation Report





One of the goals of the Mayor's Youth Council was to investigate the development of skate parks in Chatham-Kent.



**In Line Skating  
Prohibited**



**WHY does  
Chatham-Kent  
need skate parks?**



# Youth Recreation Development Strategy Report

- When 1505 youth were asked what sport or activity they would like to see offered in Chatham-Kent in the next year, skateboarding was ranked 5th out of 65 proposed activities.
- Out of the 1505 youth who were asked if they had any suggestions regarding the use of skateboards, bicycles, scooters and rollerblades in the community, 439 youth (32%) responded, “build a skate park”. This response was ranked 2nd out of 9 total responses.

# Input from other Municipalities

Burlington

Ridgetown

London

Kitchener

Thamesville

Cambridge

Halton Hills

Blenheim

Sudbury

Oakville

St. Catherines

Windsor

Sarnia

Guelph

Brantford

Amherstburg





# Goals of the Skate Park Municipal Comparison

- Obtain a comprehensive skate park survey.
- Draw on other municipalities' experiences, particularly regarding site selections, design, public meetings and funding.
- Obtain policies with respect to liability, risk management and insurance.

Skate Parks Visited

# Ridgetown

\$20,000



# Thamesville

\$27,000



# Blenheim

\$45,000



# Amherstburg

\$80,000



# Windsor

\$250,000



# London

\$250,000





## Recommendations from Other Municipalities

- A Steering Committee comprised of staff, police, risk manager, and skateboarders should be formed to guide the site selection and design process.
- Specific Criteria should be used to select a site.
- Public meetings should be held to obtain community input.
- A poured concrete structure should be used as the preferred surface as it is more durable than steel or wood, it reduces noise and has little or no maintenance expense.

# Insurance, Liability & Risk Management

The Insurance/Risk Management Co-ordinator has checked with other municipalities across Canada and the responses have been that very few claims have been received.

Municipalities limit their risk exposure and liability by following these basic principles:



Good design and location



Proper and complete signage



Regular, routine and documented inspection and maintenance records are critical

# Proposed Locations for Chatham-Kent Skate Parks

## Recommended Locations for Chatham-Kent

Location	Population	Percent of Population ages 5-24
Chatham	43,690	27.7%
Wallaceburg	11,114	28.1%
Tilbury	4,599	26.9%
Dresden	2,572	27.2%

# Estimated Minimum Costs

Location	Population	Estimated Cost
Chatham	43,690	\$110,000
Wallaceburg	11,114	\$75,000
Tilbury	4,599	\$50,000
Dresden	2,572	\$50,000
<b>TOTAL</b>		<b>\$285,000</b>

# Proposed Implementation Plan



Community Health & Protective Services  
Culture & Recreation Services



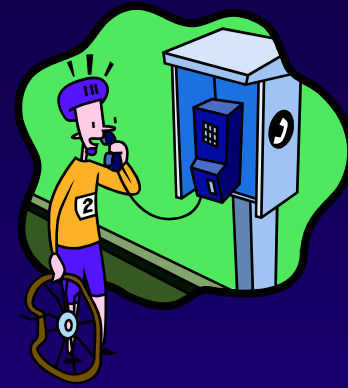
Chatham-Kent Police Services



Infrastructure & Environmental Services  
Recreation Facilities

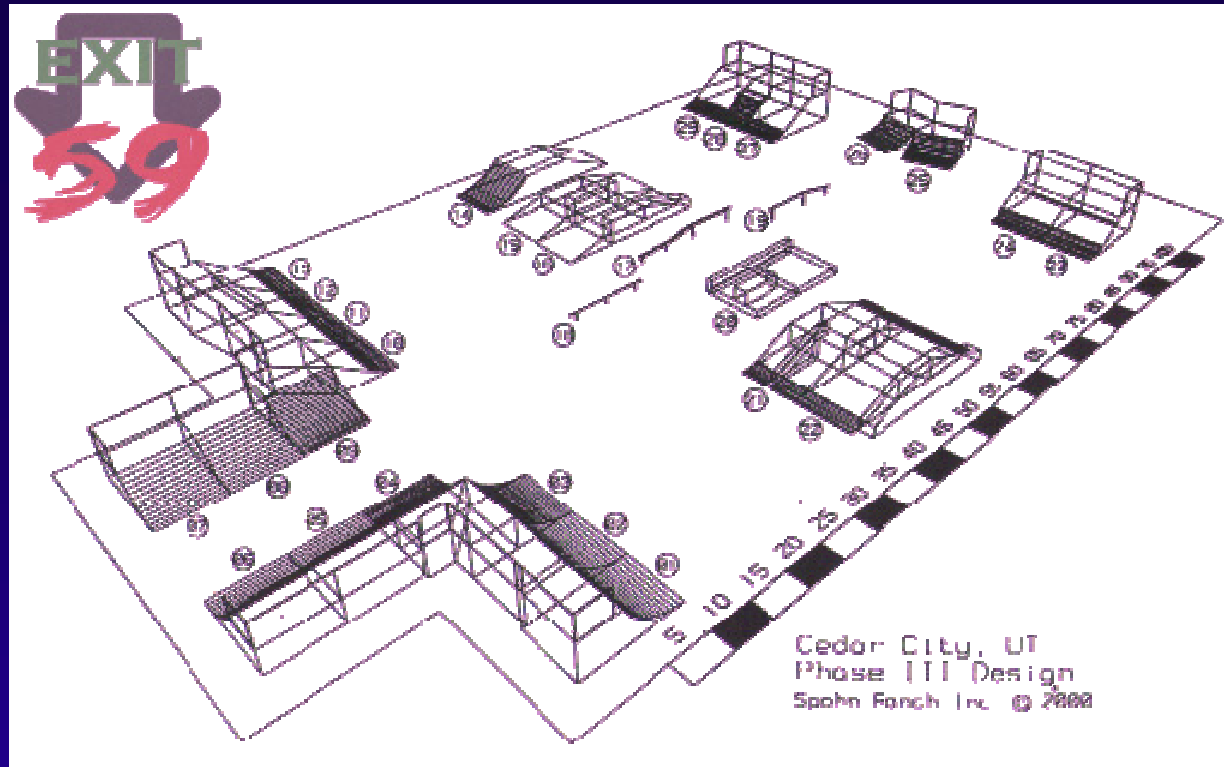


**Step #1: Develop a Skate Park Steering Committee.**



Step #2: Conduct a skate park site assessment in the selected Chatham-Kent communities based on the Chatham-Kent site selection criteria.





Step #3: Work with interested skateboarders, BMX riders and rollerbladers in each of the proposed communities to assist in the design and construction of each skate park.



Step #4: Obtain design approval from the Chatham-Kent skate park Steering Committee and hold public meetings on each of the selected sites and designs.



Step #5: Report back to Council in September 2003 to obtain approval on the selected sites and designs.



Step #6: Pending funding and approval by Council, pursue the tendering, construction and official opening of each proposed skate park.

- Invest in our youth
  - Invest in our community
- Invest in the development of Skate Parks



This document is complimentary and is provided from the National Recreation Database by the [Lifestyle Information Network \(LIN\)](#) [www.lin.ca](http://www.lin.ca)

