

Land-use Framework

ARPA Conference and Energize Workshop
WEAVING VALUES ∞ SPIRIT OF PLACE
Lake Louise
October 29 – 31, 2009




Presenters:



Glen Tjostheim, Land Use Secretariat
Simon O'Byrne, Stantec- LARP
Judy May McDonald, O2 Planning + Design Inc. - SSRP




Land-use Framework

Public/ Stakeholder/ Public Consultation

- Fall 2006 – Focus Group Session
- December 2006 – Cross-Sector Forum
- April to December 2007 – Open Houses
- June to October – Stakeholder Working Groups
- May to October 2008 – Feedback on draft Land-use Framework
- Final Framework December 2008



LUF Priority Actions

Immediate priorities

- Legislation to support the framework, Spring 2009
- Development of regional plans for South Saskatchewan and Lower Athabasca regions
- Completion of metropolitan plans for the Capital and Calgary sub-regions

Policy gaps and areas of provincial interest to be addressed

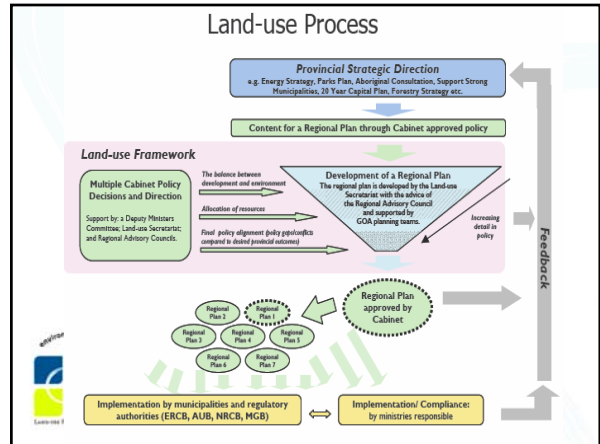
- Manage subsurface and surface activities
- Reduce fragmentation and conversion of agricultural land
- Develop a transportation and utility corridors strategy
- Manage recreational use of public lands
- Conserve and protect the diversity of ecological regions
- Manage flood risk

Land-use Framework: Context for Legislation

- Provincial leadership
- Balancing environmental with economic and social considerations
- Increased Certainty
 - Integrate and coordination of provincial policy
 - Align planning/decision making
- Encourage stewardship and conservation





Land-use Regions

Lower Peace
Upper Peace
Lower Athabasca
Upper Athabasca
North Saskatchewan
Red Deer
South Saskatchewan



Regional Plans

Define regional outcomes (economic, environmental and social) and a broad plan for land and natural resource use for public and private lands

Align provincial strategies and policies at the regional level

Determine specific trade-offs and appropriate land and natural resource management for specific landscapes within a region

Define the cumulative effects management approach for the region and identify targets and thresholds



Government of Alberta

Regional Plans cont'd

Provide direction and context for local plans within the region while recognizing the authority and role of municipalities in local decision-making

Approved by Cabinet -government policy

Subject to regular reviews and public reporting

- Evaluation and Public report on Plan implementation – after 5 years
- Complete plan reviews – every 10 years

May identify a need for more detailed plans to address specific regional issues/needs

May be amended to reflect changes in provincial policy



Government of Alberta

Regional Plan Hierarchical Structure



Government of Alberta

ALBERTA LAND STEWARDSHIP ACT Bill 36



Government of Alberta

Regional Plans: Foundational Building Blocks of Land-use Framework

Plan for each of seven planning regions

- Support provincial priorities
- Unique to regional priorities, issues, resources
- Longer-term view

ALSA gives authority to the regional plans

- Approved plan is public policy for that region
- Must be followed



Government of Alberta

Regional Plans

Describe a vision of the desired future of the region

Describe integrated outcomes of what we want to achieve at the regional level:

- a healthy economy supported by our land and natural resources;
- healthy ecosystems and environment; and
- people-friendly communities with ample recreational and cultural opportunities.

Describe what will be done to achieve the vision and outcomes:

- setting appropriate targets and thresholds.
- identifying trade-offs and choices that will be made to balance economic development with environmental and social considerations.



Government of Alberta

Developing Regional Plans

Regional Advisory Council (RAC) for each region will be established

- Interests in region represented—municipal, industry, economic, community, Aboriginal

Terms of reference prepared by government

RAC gives advice to government on contents of regional plan

Government:

- Develops draft plan
- Consults with public, stakeholders, municipalities, Aboriginal peoples
- Approves the regional plan



Government of Alberta

Effect of a Regional Plan

It is a legal document and public policy for the region

The Crown, government departments, local authorities, decision-makers, the public must align plans and decisions with regional plan



Government of Alberta

Sub-Regional Plans

A regional plan may

- Authorize preparation of a sub-regional
- Adopt or incorporate another plan as a sub-regional plan
e.g. Calgary, Capital metropolitan plans



Government of Alberta

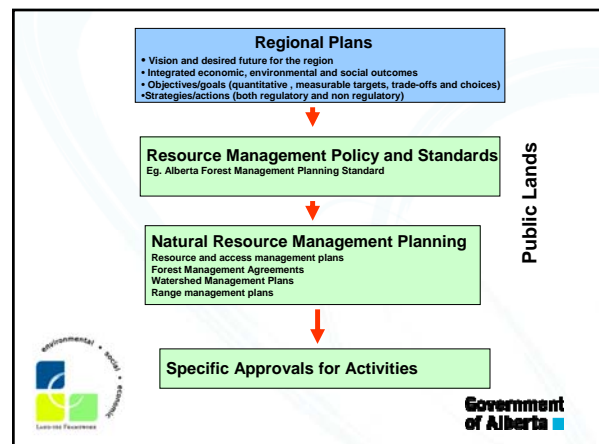
Implementation of Regional Plans through:

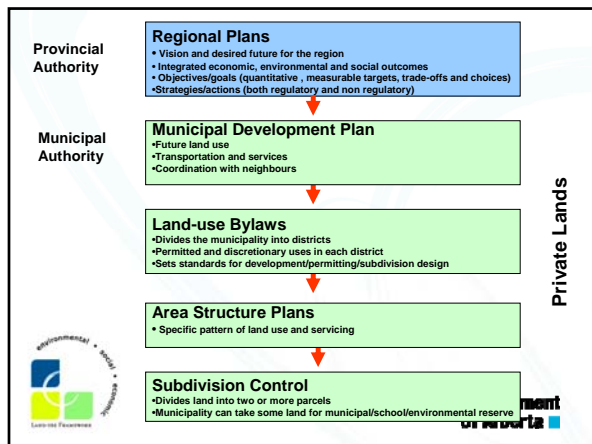
Existing provincial legislation and processes (eg. Public Lands Act, Municipal Government Act, ERCB)

- Requires officials under these existing Acts to ensure their plans and decisions align with direction in regional plans
- Provincial, municipal and other decision making bodies may need to make changes or implement new initiatives to comply with the regional plan



Government of Alberta





Conservation and Stewardship Tools

ALSA expands tools box to provide options for decision makers

- Conservation Easements
- Conservation Offsets
- Conservation Directives
- Transferable Development Credits

Government of Alberta

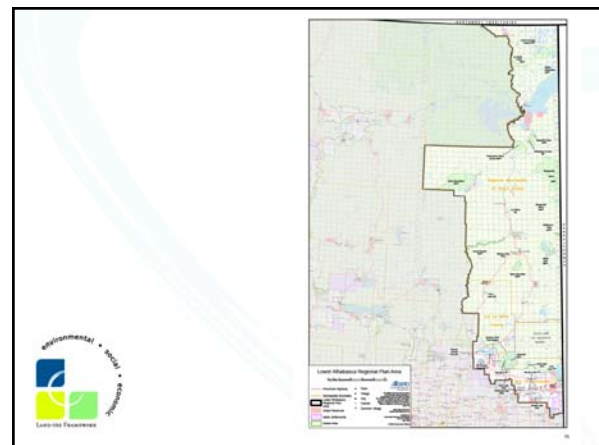
Consequential Amendments

Consequential amendments across ministries

Align other Acts (27) with ALSA

- e.g.: *Municipal Government Act, Mines and Minerals Act, Public Lands Act, Forests Act, Alberta Utilities Commission Act, ERCB Act, NRCB Act, Coal Conservation Act, Electric Utilities Act, Oil & Gas Conservation Act, Oil Sands Conservation Act, Pipeline Act,*

Government of Alberta



Lower Athabasca Regional Plan

Regional Advisory Council

- Has met 8 times to the beginning of October.
- Meets monthly, usually for two or three days at a time.
- RAC is currently working on formulating its advice to Cabinet based upon the Terms of Reference.

Government Planning Team

- Has met over 18 times – representatives from over 15 GOA ministries.
- Provides support to the RAC
- Providing/writing information for the Regional Plan

Government of Alberta

Lower Athabasca Regional Plan

Consultation

- 14 public/stakeholder sessions were held in the months of May and June bringing awareness of the Land-use Framework and the Alberta Land Stewardship Act.
- Meetings have been held with 17 of 18 Aboriginal communities to bring awareness of the Land-use Framework.
- Phase 2 Consultation sessions will begin in winter 2010 and Phase 3 consultation on the draft plan will follow in late winter or early spring.

Government of Alberta

RAC to consider:

Tourism development across the region with emphasis on the Lakeland Country

Recreational development, including advice on effective management of recreational activities on provincial Crown land

The general location of future transportation and utility corridors and considerations that must be addressed by the Government in planning their specific locations



Government of Alberta

RAC to consider:

The implications associated with the economic development scenarios and the municipal service needs of a growing population and labour needs

The impacts to Aboriginal communities as well as treaty and other constitutional rights exercised by members of those communities



Government of Alberta

Summary – RAC’s Tasks

Assess development scenarios - Environment and social considerations

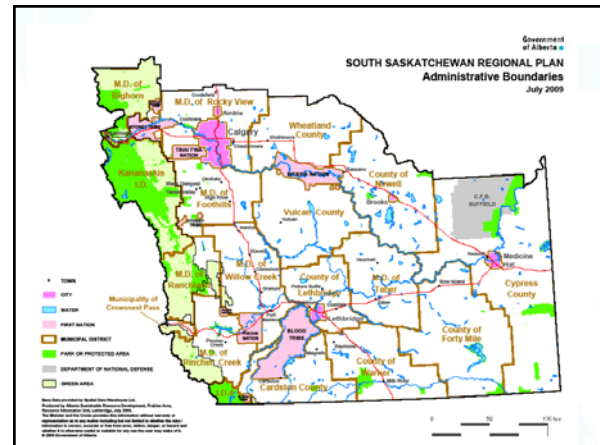
Assess options for long-term forestry

Identify conservation areas considering:

- recreation & tourism development options
- location of transportation & utility corridor
- Impacts to Aboriginal communities



Government of Alberta



South Saskatchewan Regional Plan

Regional Advisory Council

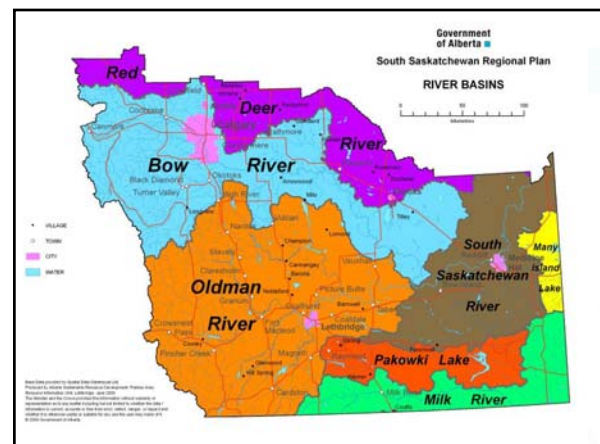
- Has met 4 times to October 7. Meets approximately every 6 weeks for 2 day meetings
- Has worked on a Vision statement, Objectives and received several presentations

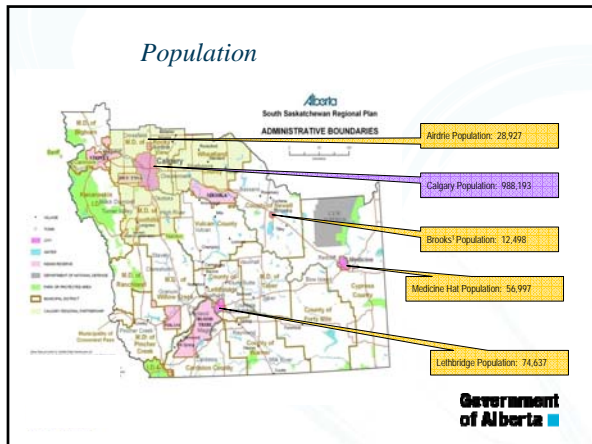
Government Planning Team

- On October 15 met for the 8th time
- Meets twice a month and as needed
- Main task to date is bringing information for RAC and work on Outcomes, Objectives and Strategies



Government of Alberta





South Saskatchewan Regional Plan

Consultation

- Three Phases are proposed
 - Awareness: Terms of Reference, Profile of the Region Land-use Framework and the *Alberta Land Stewardship Act*
 - Input on the Vision, Outcomes and Objectives to help articulate the importance and the uniqueness of the region
 - Draft version of the Regional Plan for review and comment.
- Timing
 - Phase 1 in late fall 2009 (Late November to early December)
 - Phase 2 – Late winter 2010
 - Phase 3 – Late Spring 2010

Government of Alberta

Recreation and Tourism Destinations

SSR → amongst most popular tourism and recreation destinations in Alberta

Legendary → West vs East

West Protected Parks

East Protected Parks

Government of Alberta

Recreation and Tourism Supply

Public Sector

- Federal Government
 - National Parks
- Provincial Government
 - Provincial Parks
 - Public Lands
- Local Government

Private Sector

- Commercial Operators
- Not-for-profit Operators

Government of Alberta

Recreation on Public Lands

Unmanaged recreational/tourism use of public lands is a significant issue in the SSR

SRD works with recreation communities to manage designated motorized, non-motorized and mixed-use trail systems

Most popular trail systems on public lands: in the Ghost, McLean Creek, the Castle Special Management Area FLUZ's and the Continental Divide Trail

Government of Alberta

In Summary:

Support land use planning related education programs in Alberta, e.g., UofA Planning Stream

ARPA members need to stay informed and engaged

Participate in your Regional Plan

Government of Alberta

QUESTIONS?

Website: <http://www.landuse.alberta.ca>





This document is complimentary and is provided from the National Recreation Database by the [Lifestyle Information Network \(LIN\) www.lin.ca](http://www.lin.ca)

