

Lakeridge Skate Park, Regina SK

The City of Regina recently designed and constructed a concrete, multi-use skate park that is proving to be very popular with youth. The Lakeridge Skate Park, located at 5451 Rochdale Boulevard next to Winston Knoll Collegiate, is a multi-use skate facility initiated by the community, schools and local retail businesses. From the beginning, the design of the park involved local youth who would be the primary users of the facility. The design team also included a local skateboard consultant. The success of the park is attributed to youth involvement and expert design.



Figure 1: The steady crowd demonstrates the Skate Park's success.

Background:

A master plan for the Lakeridge Athletic Sports Park was developed in 1986. The athletic fields and ball diamonds were the first elements on the plan to be developed. However, other areas of the park were left unprogrammed with development to be phased in over a number of years.

In 1998, the Parent Advisory Committee (PAC) from Winston Knoll Collegiate asked the City to be included in the design process for the remainder of the park. A meeting was held with the students, PAC, Winston Knoll Collegiate and Michael A. Riffel High School, as well as other community groups, to discuss the master plan. As a result, a decision was made to revise the plan. Students from both schools were asked to identify what activities and components they felt were needed. The students' requests and Committee feedback led to the decision to include a multi-use skate park in the master plan.

The City made contact with a number of other municipalities during the planning stage. Their advice was clear – “make sure the kids are involved”. From the first meeting to review the master plan, it was recognized that the primary users of this park would be teens and therefore they should have a major voice in deciding what goes into the park and what features the skate park should have.

A workshop was hosted in December 2000 with skateboarders from the area. The boarders helped identify what kind of features (ramps, rails, etc.) the park should have. These ideas were compiled and helped determine the layout for the site. From there, decisions needed to be made on the exact design and detailing for the features.

Noel Wendt, a local skateboarder with experience in ramp construction and skate park design, was asked to help out with compiling the students' ideas into a unified park design. He also provided invaluable information on the construction detailing, ramp angles, curves and spacing. The City's Project Services and Landscape Design Division acted as prime consultant and project manager for the park with structural engineering provided by Donovan Engineering.

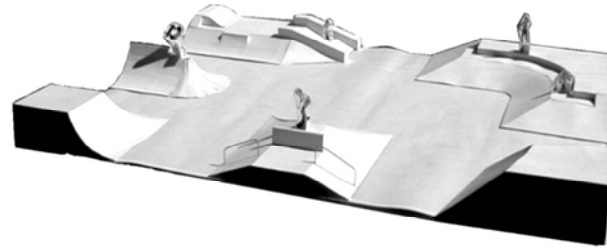


Figure 2: 3-D design model.

Construction of the concrete work was completed in the fall of 2001 at a cost of \$210,000.

Design:

The 22 X 27 metres (600m²) park was intended as a multi-use facility, accommodating roller-blades, BMX bikes, scooters, and skateboards. For example, a number of specific design details protect the concrete from the additional wear incurred from BMX bikes.

The ramp elements of the skate park are arranged to provide a “street style” circuit of tricks for a wide range of skill levels. The components were based on typical skateboarding ramps or pipes but were designed in a unique way to provide a one-of-a-kind experience. This included such elements as a Fun Box, Corner Bowl, Corner Bank, Pyramid, Corner Tranny, Spine and Grind Rail.

The concept of the perimeter walls was to create a space that felt like the ruins of a building, in which the walls

remain partially standing, all the components are enclosed within the walls and the landscape molds itself around the outside of the walls like drifting snow or sand. Functionally, the perimeter walls tie the elements together, providing sitting areas and protecting the audience from out-of-control skateboards. The berms surrounding the walls reduce the fall height, provide audience-viewing areas and anchor the park in the landscape.

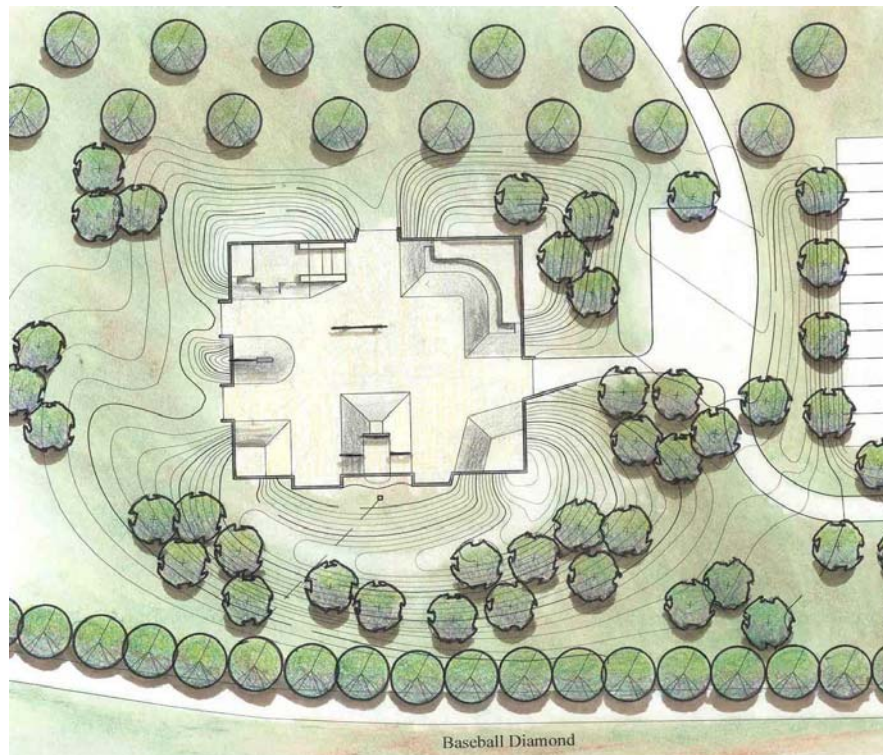


Figure 3: Landscape Plan.

Future plans include lighting, landscaping and an asphalt free-skate area. The master plan for the Lakeridge Athletic Sports Park also calls for a basketball/roller hockey court to be built between the Skate Park and Winston Knoll Collegiate – possibly in 2004.

Risk Management:

The park is unsupervised and there is no admission fee. As it is unsupervised, there is no means to enforce the use of helmets and other safety gear, even though on-site signage highly recommends its use.

The issue of liability and insurance is a common concern and is always one of the first questions to be raised. Studies have shown that skateboarding related injuries are less frequent relative to other active sports such as football, soccer, and baseball. The City uses prudent risk management strategies to minimize risk and maintains a comprehensive insurance program to provide protection for any risks that remain, including the Lakeridge Skate Park.



Figure 4: Graffiti art project.

Graffiti Art Project:

The Skate Park Graffiti Art Project was initiated in 2001 by the Civic Art Collection Committee, a committee of City Council. The project recommended the development of graffiti art murals as public art, to be painted at the Lakeridge Skate Park. The project involved public consultation, a two-day youth graffiti workshop and the installation of the artwork. The intent of the project was to pursue the beautification of a public space through the installation of public art. The skate park was seen as an ideal opportunity to demonstrate graffiti as an art-form and to replace the graffiti vandalism that was inevitable.

A Skate Park Graffiti Art Committee is now being established to monitor the skate park graffiti and to oversee future installations.

Success:

The Skate Park is proving to be extremely popular. The park attracts a small crowd regularly and is occasionally used for special events. In anticipation of developing additional skate parks, the City recently purchased a portable skate park that will be used at a variety of sites throughout the city to help determine the best location for any future skate parks.

Design & Construction Team:

Prime Consultant and Project Manager: City of Regina, Project Services and Landscape Design Division
Tel: (306) 777-7803
Dominique Clincke, SALA, CSLA

Skateboard Consultant: Central Woodworks, Inc.
Tel: (306) 924-0326
Noel Wendt, President

Structural Engineer: Donovan Engineering Ltd.
Tel: (306) 757-9681
Bruce Peberdy, B.E., P.Eng.

Prime Contractor: Westridge Construction Ltd.
Tel: (306) 352-2434
Leon Friesen, President

Graffiti Art Program: City of Regina, Community and Leisure Services Division
Tel: (306) 777-7803
Christine Lavoie, Program Specialist